

# MAINE AQUACULTURE 2021

- **> 24 DIFFERENT SPECIES GROWN** (fresh and saltwater)
- **152 FARMS, 54** (pending)
- **804 LPA  $\approx$  150** (pre-revenue),
- **110 TERMINATED, DENIED OR EXPIRED SINCE 2009**
- **1750 OCEAN ACRES**
- **3-5 LAND BASED RAS STARTUPS**
- **480 GOODS AND SERVICES COMPANIES**
- **\$80 -100 MILLION FARM GATE** (\$153 economic impact)
- **650 – 700 DIRECT EMPLOYMENT**



# 20 YEAR AVERAGE ANNUAL GROWTH RATE



8%



1%



2%



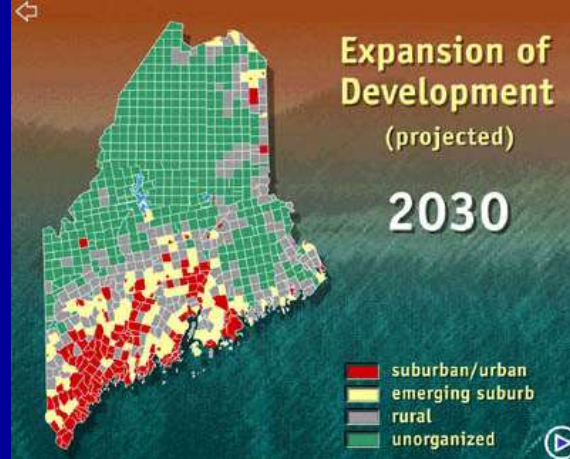
# **MAINE AQUACULTURE**

## **WHAT HAS DRIVEN GROWTH?**

- **OUTSTANDING GROWING CONDITIONS**
- **1 STOP PERMITTING**
- **LEASING SYSTEM SCALED TO RISK**
- **LOWER BARRIER TO ENTRY FOR SMALL FARMS**
- **RIGOROUS ENVIRONMENTAL MONITORING**
- **WORKING WATERFRONT TRADITIONS**
- **TRAINING ACADEMIES**
- **PROXIMITY TO MARKET**
- **MAINE BRAND**





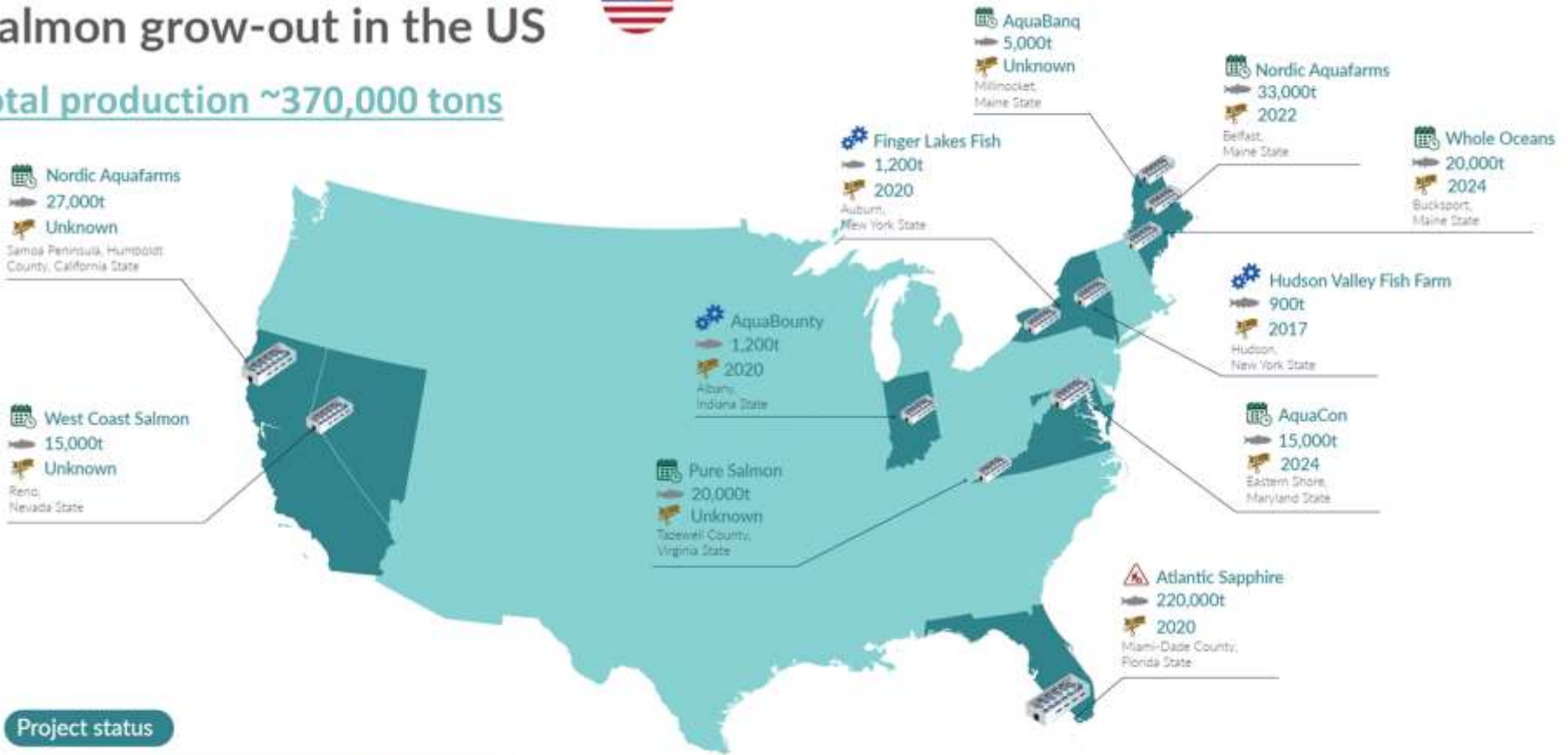


ME SPO

- **TRADITIONAL NATURAL RESOURCE BASES DEPLETED**
- **DRAMATIC INCREASES IN PROPERTY VALUES AND TAXES**
- **SIGNIFICANT DEMOGRAPHIC SHIFTS**
- **NON EXTRACTION RESOURCE USE LIFESTYLE/TOURISM** ↑
- **EXTRACTIVE COMMERCIAL NATURAL RESOURCE USE** ↓
- **TRADITIONAL SOCIO-ECONOMIC GROUPS** ↓
- **POLITICAL AND ECONOMIC DEVELOPMENT DRIVEN BY TOURISM, RESIDENTIAL DEVELOPMENT, AND RETIREES**

# Land-based RAS projects for salmon grow-out in the US

**Total production ~370,000 tons**



**Project status**

- Operating
- Under construction
- Commission year
- Planned
- Capacity (per year)

**The Land-Based Salmon Handbook, 2020, Undercurrent News**