



United States Department of Agriculture

OVERVIEW OF EMERGING ANIMAL DISEASE PREPAREDNESS AND RESPONSE PLAN

DANA J. COLE
DIRECTOR-RISK IDENTIFICATION AND RISK ANALYSIS

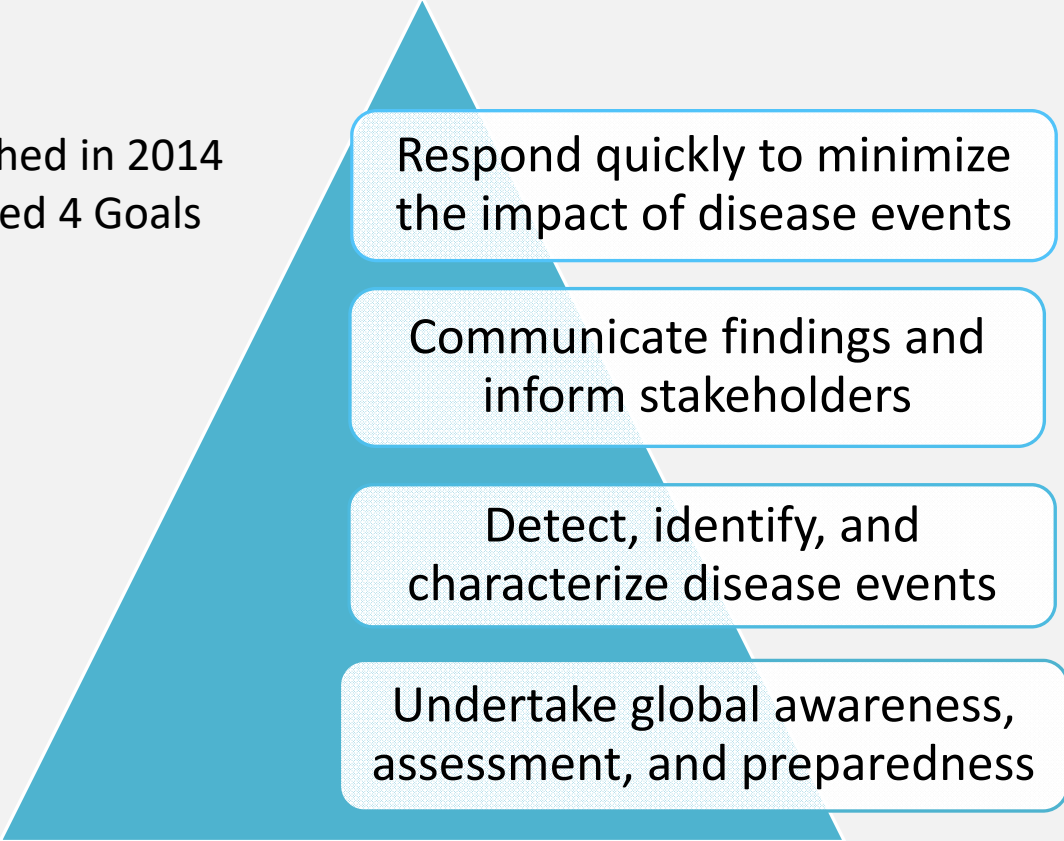
LEE ANN THOMAS
DIRECTOR-AVIAN, SWINE, AND AQUATIC ANIMAL
HEALTH CENTER

U.S. DEPARTMENT OF AGRICULTURE
ANIMAL AND PLANT HEALTH INSPECTION SERVICE
VETERINARY SERVICES
OCTOBER 2016

A solid green horizontal bar at the bottom of the page.

Veterinary Services Proposed Framework for Response to Emerging Animal Diseases in the United States (EDF)

- Published in 2014
- Outlined 4 Goals



Respond quickly to minimize the impact of disease events

Communicate findings and inform stakeholders

Detect, identify, and characterize disease events

Undertake global awareness, assessment, and preparedness



Emerging Animal Disease Preparedness and Response Plan

Purpose:

Provide the strategic direction for the Veterinary Services (VS) program of the U.S. Department of Agriculture's Animal and Plant Health Inspection Service (APHIS) to detect and respond to emerging animal diseases.

Define monitoring, assessment, communication activities and possible response measures for an emerging animal disease occurring in the United States.



Emerging Animal Disease Preparedness and Response Plan

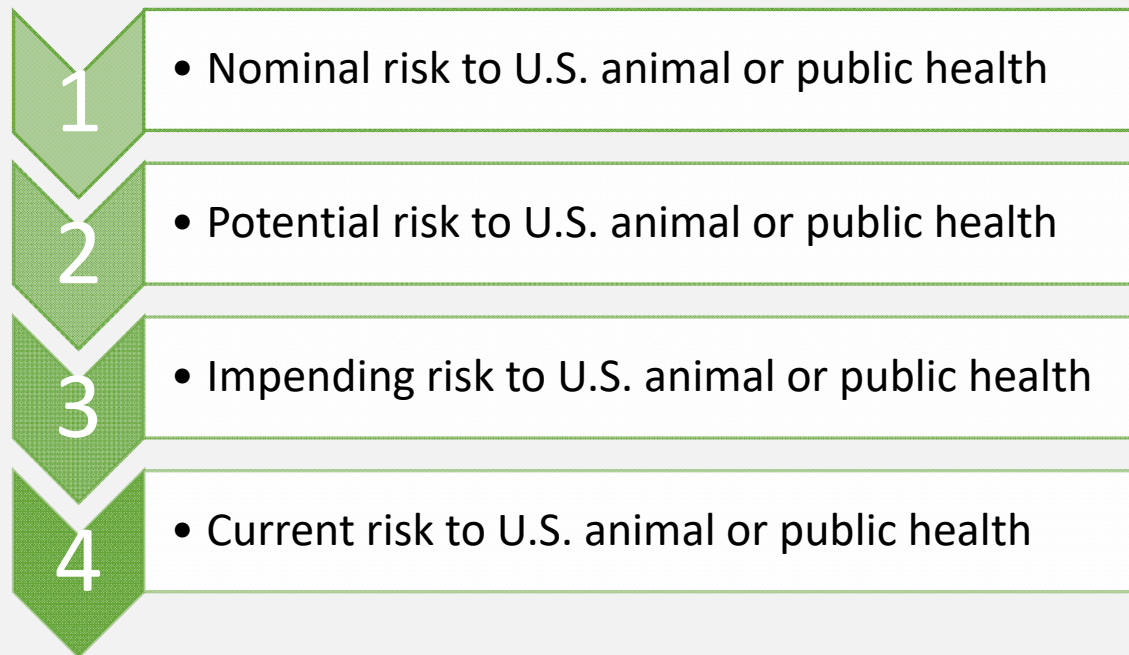
Emerging disease definition:

A disease, infection, or infestation in domestic or wild animals that is a threat to terrestrial animals, aquatic animals, or humans, and meets one of the following criteria:

1. An unknown agent that is causing disease, infection, or infestation in a herd/flock/premises and has the potential to result in a significant animal or public health impact, and applied diagnostic tests have yielded negative or non-definitive results; OR
2. A newly identified agent that is causing disease, infection, or infestation in a herd/flock/premises and has the potential to cause significant animal or public health impact, or is occurring in multiple herds/flocks/premises; OR
3. A previously identified or known pathogenic agent that has a change in epidemiology, such as:
 - a) Increased pathogenicity,
 - b) Expanded host range,
 - c) Change in geography of an agent with the potential to cause a significant animal or public health impact, or
 - d) Unexpected morbidity/mortality

Emerging Animal Disease Preparedness and Response Plan

Plan defines 4 risk levels of emerging disease, and factors used to make preliminary assignments of diseases to risk levels.





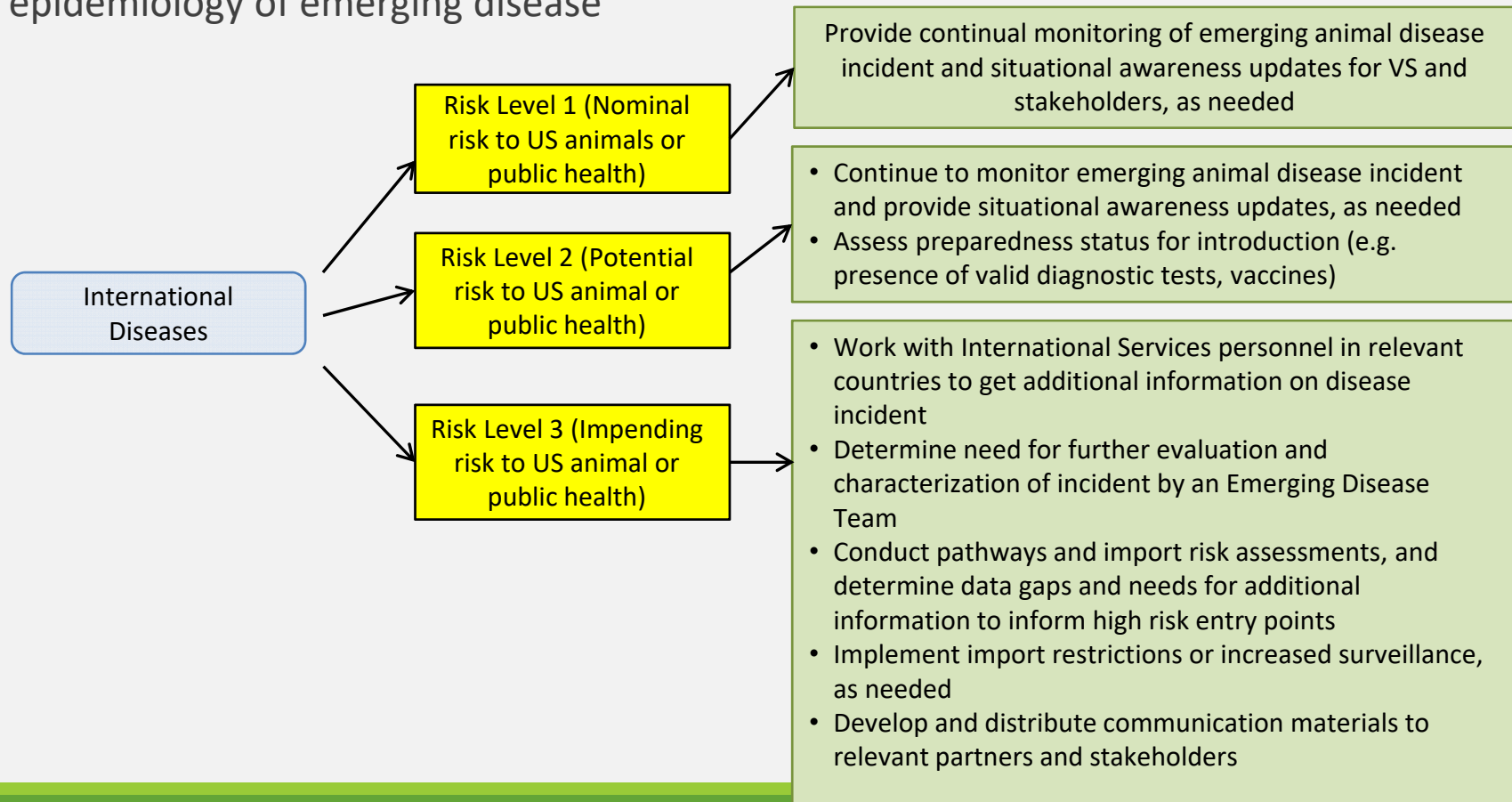
Emerging Animal Disease Preparedness and Response Plan

Plan defines roles and responsibilities

- **Risk Identification Team:** maintain global awareness and provide preliminary assignments of diseases to risk levels
- **VS leaders:**
 - Review preliminary assignments of diseases to risk levels
 - Determine communications and response options
- **States:**
 - Communicate disease information to VS Assistant Directors
 - Discuss and participate in response
- **Industry:**
 - Communicate disease information
 - Address questions concerning potential disease risks and concerns
 - Discuss response options

Emerging Animal Disease Preparedness and Response Plan

Plan outlines possible response options to be undertaken, depending on epidemiology of emerging disease



Domestic Diseases

Risk Level 1 (Nominal risk to US animals or public health)

- Contact diagnostician(s), state and federal partners, and relevant diagnostic laboratories to get additional information and confirmation of disease incident
- Identify needs for and conduct additional research (e.g., animal inoculation studies, additional molecular characterization of pathogen)
- Determine reservoirs, transmission pathways and potential impacts on U.S. animal or public health
- Implement increased surveillance, as needed
- Conduct an epidemiological investigation, as needed to characterize incident
- Develop and distribute communication materials to relevant agency and non-agency partners and stakeholders
- Increase diagnostic capacity, as needed

Risk Level 2 (Potential risk to US animal or public health)

- All options for Category 1
- Increase laboratory diagnostic capacity and distribution of effective vaccines
- Provide guidance to States, industry, and stakeholders for prevention, detection, and response to emerging animal disease

Risk Level 3 (Impending risk to US animal or public health)

- All options for Categories 1 and 2
- Develop a case definition for reporting
- Determine need for and establish regulations and/or new policy

Risk Level 4 (Current risk to US animal or public health)

- All options for Categories 1-3
- Conduct active surveillance (situational dependent) and develop a surveillance plan
- Conduct analytical epidemiologic investigations
- Determine need for and establish regulations for a new program (certification, control, or eradication) or new policies

Standard program, regulatory, and budgetary business practices will be followed.



Emerging Animal Disease Preparedness and Response Plan

Next Steps:

- Soliciting input. Comments requested by November 1, 2016



https://www.aphis.usda.gov/animal_health/downloads/emerging-dis-framework-plan.pdf

- Based on feedback, plan will be updated and finalized by end of calendar year



Dana Cole

Director-Risk Identification and Risk
Assessment Unit
U.S. Department of Agriculture
Animal and Plant Health Inspection Service
Veterinary Services
Phone number 970-494-7275
Email address Dana.j.cole@aphis.usda.gov

Lee Ann Thomas

Director-Director–Avian, Swine, and Aquatic
Animal Health Center
U.S. Department of Agriculture
Animal and Plant Health Inspection Service
Veterinary Services
Phone number 301-851-3524
Email address
Leeann.thomas@aphis.usda.gov



United States Department of Agriculture



U.S. NATIONAL LIST OF REPORTABLE ANIMAL DISEASES (NLRAD)

DR. THERESA BOYLE
VETERINARY MEDICAL OFFICER
U.S. DEPARTMENT OF AGRICULTURE
ANIMAL AND PLANT HEALTH INSPECTION SERVICE
VETERINARY SERVICES
OCTOBER 2016



National List of Reportable Animal Diseases (NLRAD)

What is it?

- A science- and policy-based, nationally supported standardized list of animal diseases/agents

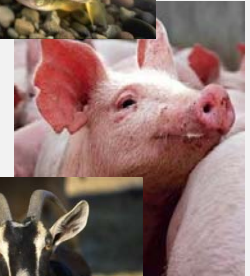
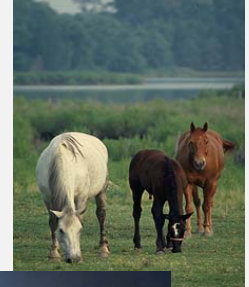
What will it do?

- Help U.S. assess, respond to, and report zoonotic, endemic, and emerging diseases
- Provide consistency and uniformity
- Meet international reporting obligations
- Support export certifications



NLRAD History

- **2006** → USAHA officially identifies need for U.S. NLRAD
- **2010** → U.S. NLRAD and white paper presented at USAHA
- **2013** → U.S. NLRAD informally incorporated into the National Animal Health Reporting System (NAHRS) in cooperation with participating states
- **2014** → U.S. NLRAD concept paper distributed for stakeholder comment
- **2016** → Draft U.S. NLRAD Framework distributed for stakeholder comment





NLRAD Framework

- Concept papers were drafted by 5 working groups:
 - Laboratory implementation
 - Information release
 - Reporting and data management
 - Roll-out and communication
 - Updates to the NLRAD
- Developed overall NLRAD Framework
- Draft of NLRAD Framework open for comment

NLRAD Framework

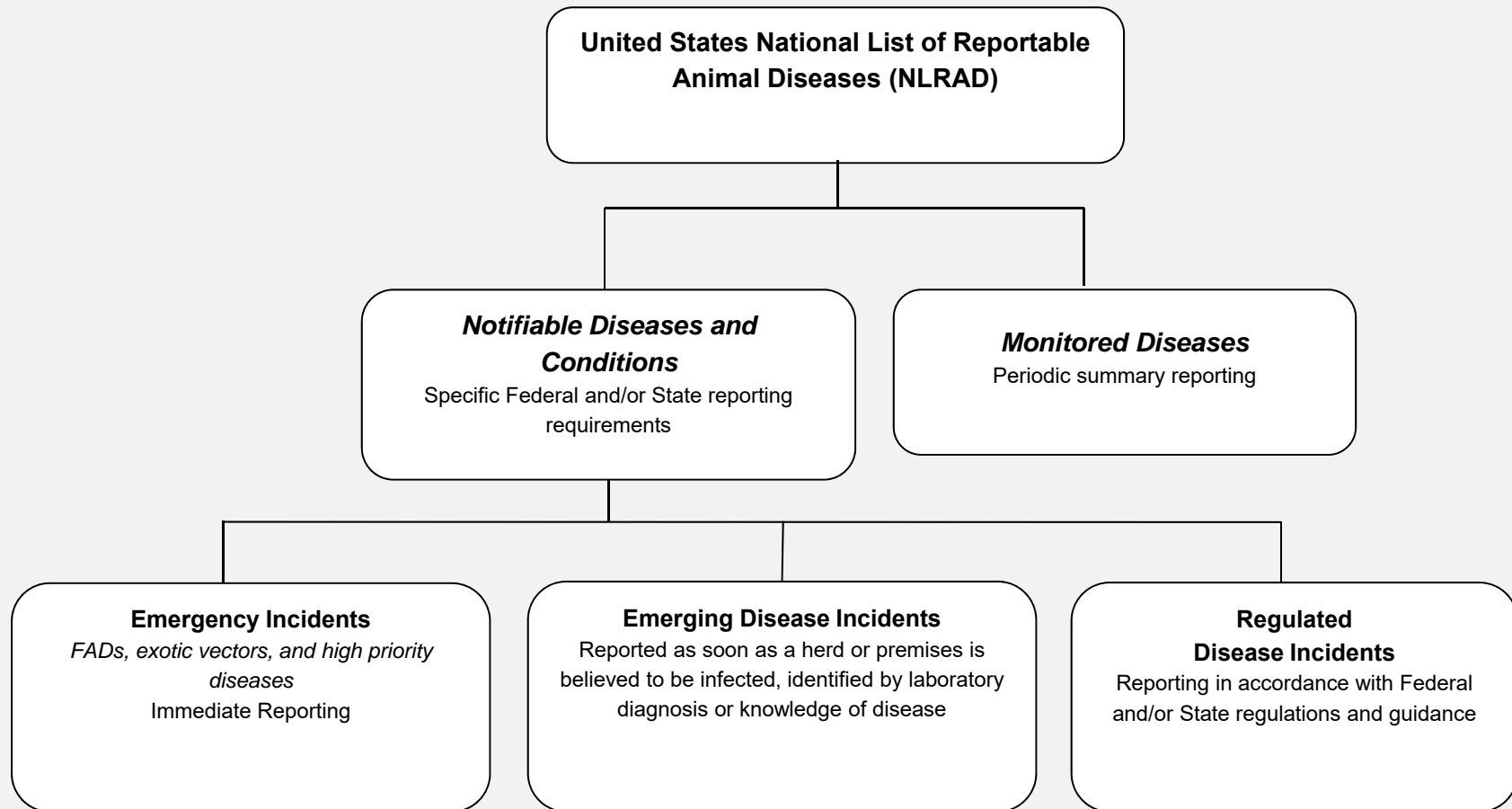
NLRAD Framework includes:

- Current U.S. list of reportable animal diseases
- Laboratory case classification and reporting requirements
- Structure and procedures
- List maintenance
- Communication
- Data management
- Information Release



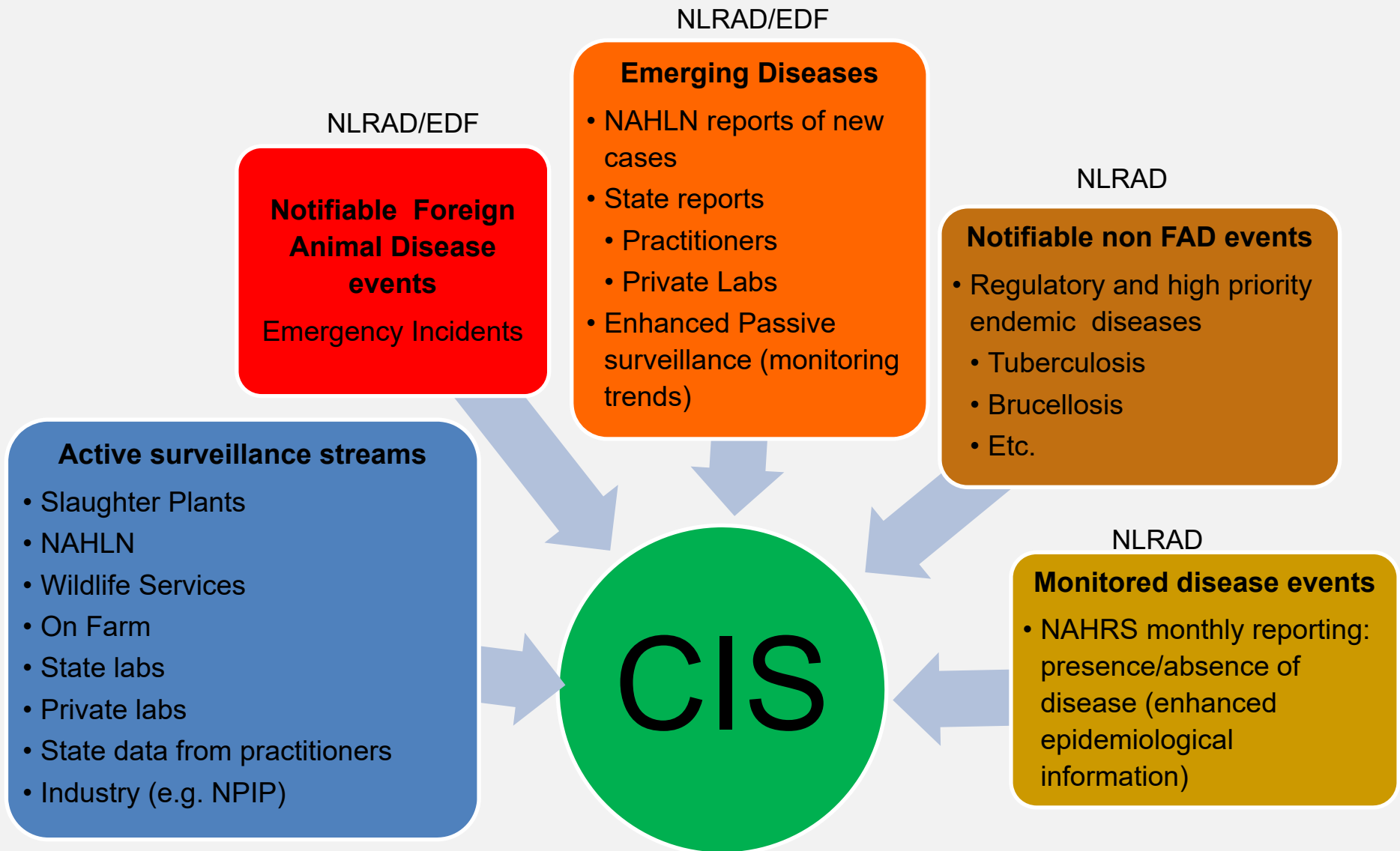


NLRAD Categories





Where does the NLRAD and Emerging Disease Framework fit in the general context of Comprehensive and Integrated Surveillance (CIS)?



NLRAD Next Steps

Finalize NLRAD Framework

Draft NLRAD proposed rule
and publish for comment

Publish NLRAD final rule
and implement



United States Department of Agriculture

Questions?

The NLRAD Framework document can be found at:

<https://www.aphis.usda.gov/aphis/ourfocus/animalhealth/program-overview/ct-national-list-reportable-animal-diseases>

Please submit comments, by December 5, 2016, to:

VS.STAS.Feedback@aphis.usda.gov



United States Department of Agriculture

Dr Theresa Boyle

Veterinary Medical Officer

U.S. Department of Agriculture

Animal and Plant Health Inspection Service

Veterinary Services

(970) 494-7310

Theresa.Boyle@aphis.usda.gov