

DHI IN 2010



Goals, Activities & Direction

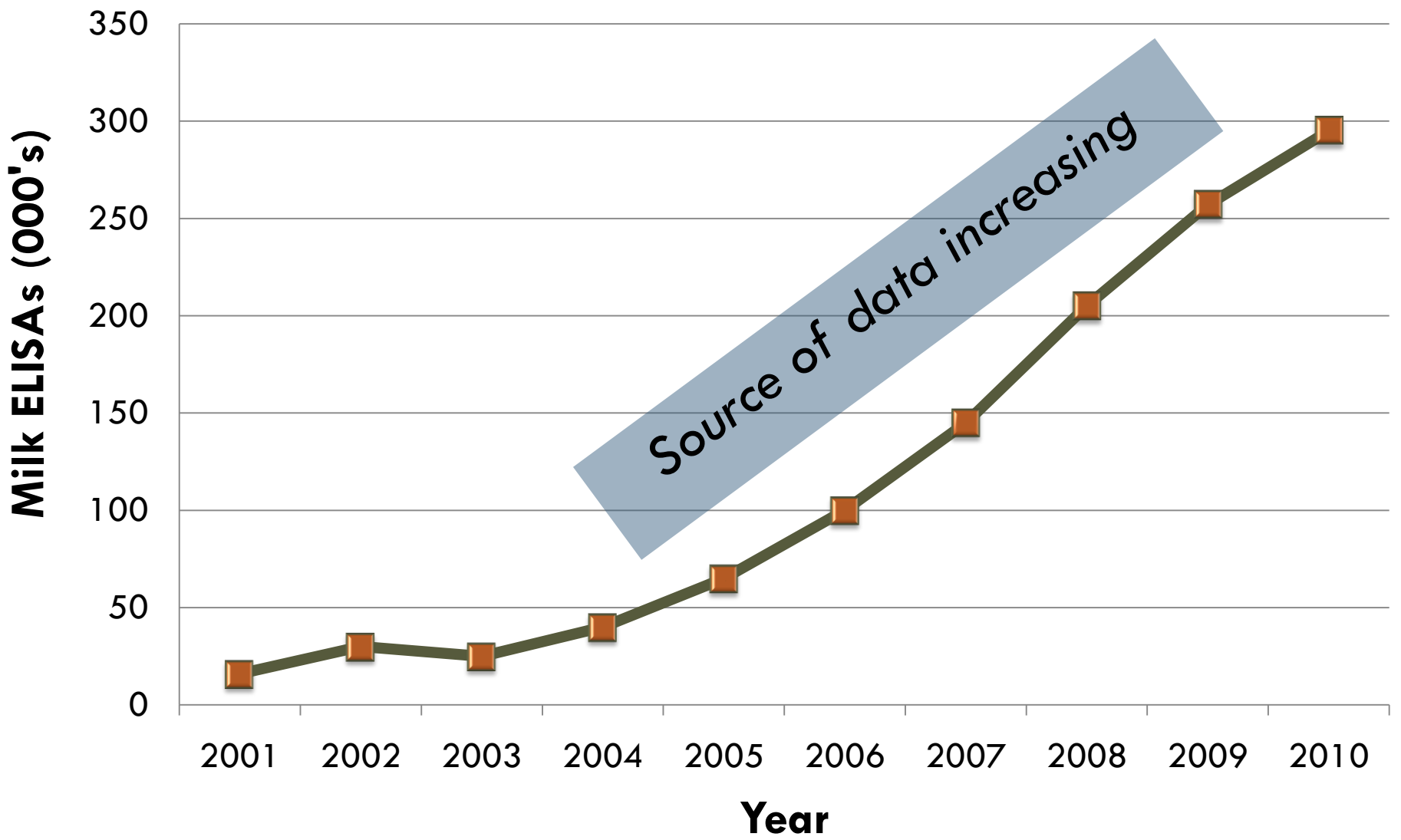
- Fully Integrated
 - ▣ ELISA Testing Into DHI
 - Cow Sampling Programs
 - Electronic Data Handling & Storage
 - Reports, Analysis & Dairy Software
 - ▣ DHI Into Voluntary Johne's Program
 - Recognition As Official Screening Test
 - Technician & Laboratory Qualification
 - Reports & Summaries

Overview DHI Testing: US and Canada

- 16 (18) of 25 DHI Organizations
 - 14 (16) of 23 in US
 - 70% Dairy Cows
 - 11 (13) Labs Testing
 - 2 of 2 in Canada
 - 100% Dairy Cows
 - 2 Labs Testing
 - Ontario (Quebec) Control Program

- Michigan
- Wisconsin (2)
- Minnesota (2)
- Pennsylvania
- Texas (2)
- Arizona
- Idaho
- Virginia
- New York
- Colorado

Johne's Milk ELISAs (North America)





Eastern Wisconsin
Dairy Herd Improvement Cooperative

718 West First Street, Waubesa, WI 53091 • 800-479-1117



AgSource
Cooperative Services

A subsidiary of Cooperative Resources International

AgSource / CRI
135 Enterprise Drive
PO Box 930230
Verona, WI 53593-0230

Milk Analysis for Johne's Disease

Ordering Customer: <u>AgSource Test Herd</u>				Herd Code: <u>35999999</u>				Tech#:							
Address: <u>135 Enterprise</u>				City: <u>Verona</u>				State: <u>WI</u>				Zip Code: <u>53593</u>			
Telephone #: <u>608 845-1900</u>				Fax #:				E-Mail: <u>rcurran@agsource.com</u>							
Report Via:				Herd Code: <u>35999999</u>											
User Customer:				Farm/Clinic Name:											
Address:				City:				State:				Zip Code:			
Telephone #:				Fax #:				E-Mail:							
ELISA Recvd Date: <u>12/31/2010</u>				ELISA Results Date: <u>01/01/2010</u>				ELISA Tested By: <u>John Dos</u>							
Animal ID	ELISA Score	Final Result	Graph Num	Animal ID	ELISA Score	Final Result	Graph Num	Animal ID	ELISA Score	Final Result	Graph Num				
85	0.4060	Med Pos	4	971	-0.0190	Negative	22	1699	-0.0190	Negative	60				
1308	0.0770	Suspect	36	1056	-0.0210	Negative	23	1765	-0.0180	Negative	61				
1340	0.2010	Low Pos	40	1089	-0.0210	Negative	24	1818	-0.0140	Negative	63				
1344	0.3330	Low Pos	41	1100	-0.0170	Negative	25	1876	-0.0210	Negative	64				
1567	0.6770	Med Pos	51	1116	-0.0190	Negative	26	1878	-0.0190	Negative	65				
1815	0.4570	Med Pos	62	1141	0.0040	Negative	27	1882	-0.0190	Negative	66				
2773	0.5540	Med Pos	80	1182	-0.0180	Negative	28	1889	-0.0200	Negative	67				
3371	0.1550	Low Pos	82	1226	-0.0220	Negative	29	1890	-0.0170	Negative	68				
7062	0.0890	Suspect	88	1230	-0.0110	Negative	30	1953	-0.0210	Negative	69				
7354	1.2010	High Pos	103	1251	-0.0180	Negative	31	1955	-0.0230	Negative	70				
7453	1.0120	High Pos	107	1265	-0.0190	Negative	32	1958	-0.0180	Negative	71				
7497	0.2990	Low Pos	112	1266	-0.0140	Negative	33	1971	-0.0140	Negative	72				
7670	0.3890	Low Pos	130	1298	-0.0170	Negative	34	1975	-0.0160	Negative	73				
7682	0.2470	Low Pos	143	1310	-0.0150	Negative	38	1984	-0.0210	Negative	74				
6	-0.0210	Negative	1	1314	-0.0210	Negative	37	1989	-0.0200	Negative	75				
21	-0.0080	Negative	2	1320	-0.0180	Negative	38	1992	-0.0210	Negative	76				
47	-0.0090	Negative	3	1333	-0.0200	Negative	39	2005	-0.0180	Negative	77				
141	0.0030	Negative	5	1347	-0.0170	Negative	42	2153	-0.0170	Negative	78				
341	-0.0200	Negative	6	1356	-0.0200	Negative	43	2572	-0.0170	Negative	79				
379	0.0070	Negative	7	1405	-0.0200	Negative	44	3109	-0.0200	Negative	81				
421	-0.0220	Negative	8	1477	-0.0160	Negative	45	5162	-0.0140	Negative	83				
449	-0.0170	Negative	9	1502	-0.0180	Negative	46	7027	-0.0190	Negative	84				
466	0.0210	Negative	11	1508	-0.0110	Negative	47	7042	-0.0190	Negative	85				



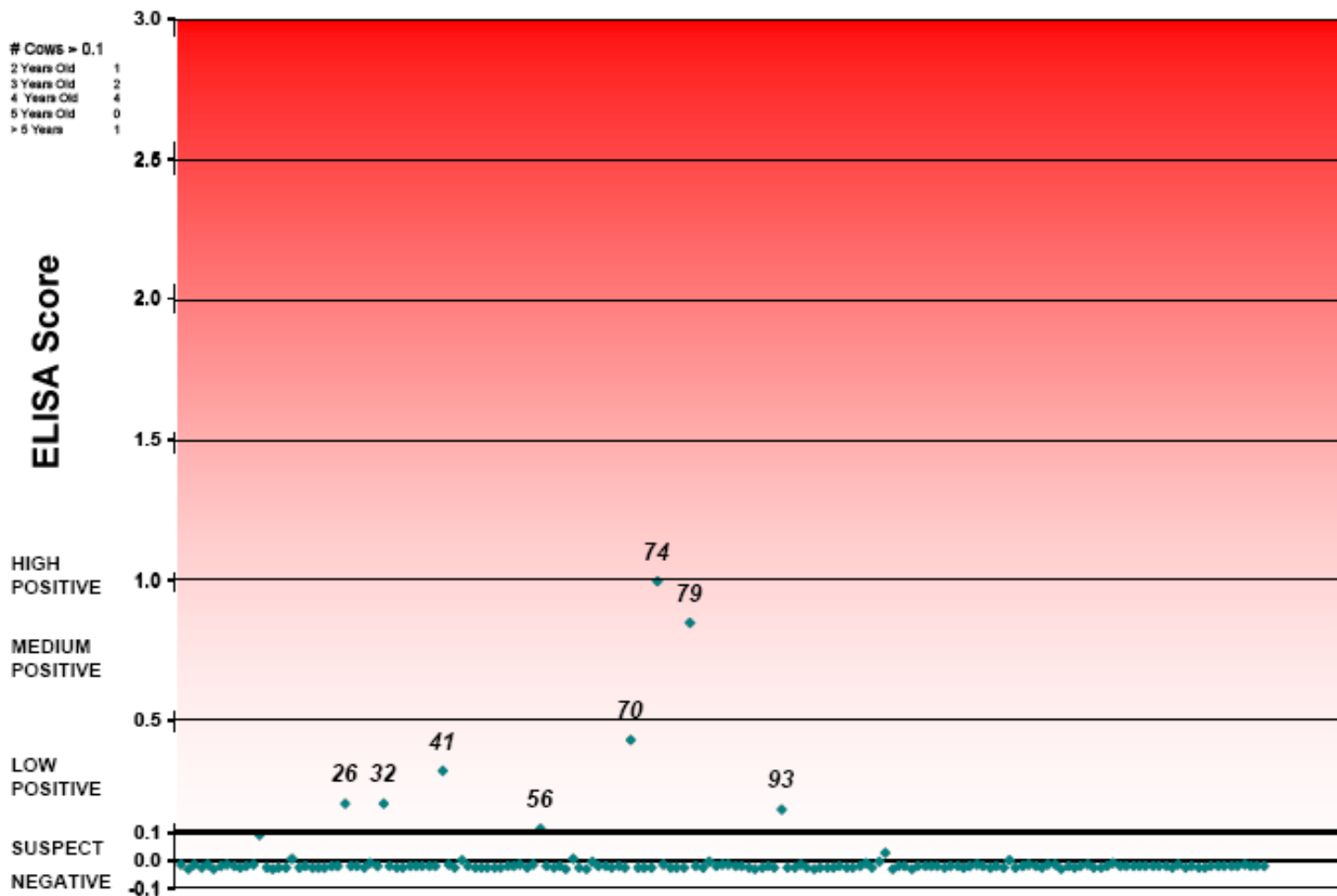
Eastern Wisconsin
Dairy Herd Improvement Cooperative
718 West First Street, Waldo, WI 53093 • 800-439-1317

Johnes Milk ELISA Test Results

Name :
Herd Code : ELISA Test Date : 2/18/2010



AgSource
Cooperative Services
A subsidiary of Cooperative Resources International



DHI ELISA Proficiency Testing

- Overview
 - Introduced January 2010
 - Web-based, Administered by QCS of National DHI
 - Monthly Test, Lab and Technician
 - Quantitative and Qualitative
 - MD and SDD against thresholds
 - Compliance
 - Resolution

ELISA Login - Mozilla Firefox
File Edit View History Bookmarks Tools Help
http://www.quality-certification.com/elisa/ELISAProfWelcome.Asp
Most Visited Customize Links Free Hotmail Windows Marketplace Windows Media Windows
National DHIA ELISA Login



Quality Certification Services
P.O. Box 930399
421 S. Nine Mound Rd.
Verona, WI 53593
Phone: 608-848-6455 - Fax: 608-848-7675
E-mail: sjsievert@dhia.org

Welcome To Quality Certification Services, Inc.

ELISA Proficiency Testing Program

Please Enter Your User ID and Password

User ID:

Password:

This page is a link to the ELISA Proficiency Program web site where raw data is entered and the resulting lab certification and comparison reports are generated. Laboratories participating in the program are provided a User ID and Password by the [QCS Manager](#). This web site will not provide useful information to other parties.

Login Reset

Done
start
Inbox - Micr... FW: Emailin... Microsoft Po... Microsoft Ex... ELISA Login ... 1:26 PM

QCS Select Trial - Mozilla Firefox

File Edit View History Bookmarks Tools Help

http://www.quality-certification.com/elisa/ELISASelectBatch.asp

Most Visited Customize Links Free Hotmail Windows Marketplace Windows Media Windows

National DHIA QCS Select Trial

Do you want Firefox to remember the password for "ANTEL BIO" on quality-certification.com?

Remember Never for This Site Not Now

[Quality Certification Services, Inc.](#)

Antel-Bio Systems

Trial 111

Select the Trial from the dropdown list you wish to change to, then Submit

Trial 108 8/16/2010

Submit Trial Selection

[Return To Menu Without Selecting](#)

Done

start

Inbox - Micr... FW: Emailin... Microsoft Po... Microsoft Ex... QCS Select ...

1:28 PM

Quality Certification Services, Inc.

Antel-Bio Systems

Heather Donohue - MAP - IDEXX

Kit Lot #:

Unknowns Lot #:

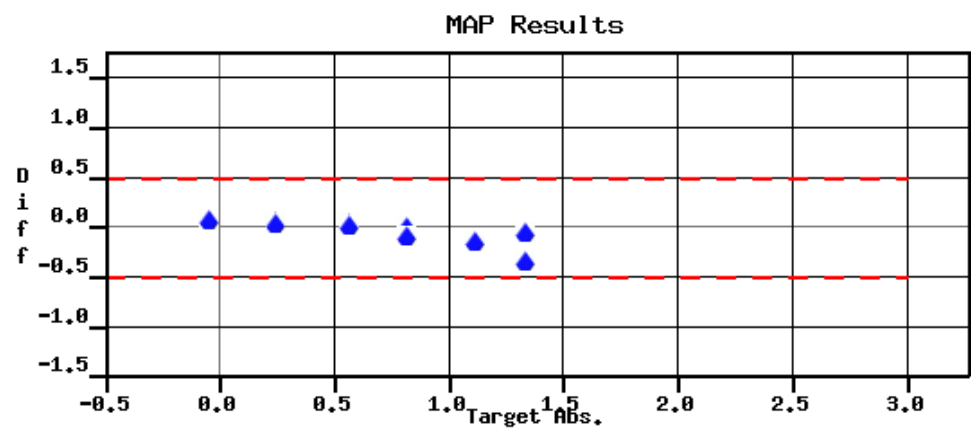
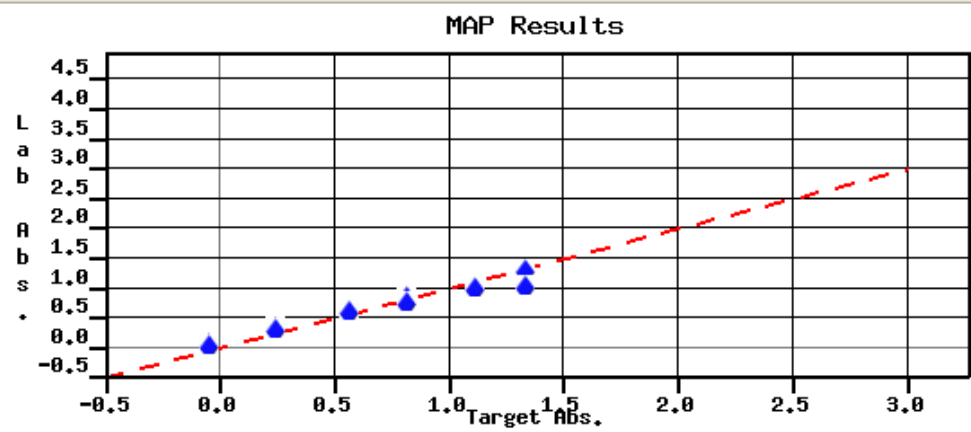
Date Test Run:

Control #	Value	Result
Neg1	<input type="text"/>	NEGATIVE
Neg2	<input type="text"/>	NEGATIVE
Pos1	<input type="text"/>	POSITIVE
Pos2	<input type="text"/>	POSITIVE
Sample #	Value	Result
1	0.000	Select Result
2	0.000	Select Result
3	0.000	Select Result
4	0.000	Select Result
5	0.000	Select Result
6	0.000	Select Result
7	0.000	Select Result

1	1.123	0.927	-0.196	Pos
2	0.825	0.783	-0.042	Pos
3	-0.037	-0.017	0.020	Neg
4	-0.037	-0.017	0.020	Neg
5	0.825	0.688	-0.137	Pos
6	-0.037	-0.019	0.019	Neg
7	-0.037	-0.019	0.019	Neg
8	1.340	1.235	-0.105	Pos
9	0.569	0.554	-0.015	Pos
10	0.569	0.536	-0.033	Pos
11	-0.037	-0.019	0.019	Neg
12	0.252	0.266	0.014	Pos
13	-0.037	-0.016	0.021	Neg
14	-0.037	-0.019	0.019	Neg
15	1.123	0.930	-0.193	Pos
16	1.340	0.961	-0.380	Pos
17	-0.037	-0.019	0.019	Neg
18	-0.037	-0.019	0.019	Neg
19	0.252	0.238	-0.014	Pos
20	-0.037	-0.019	0.019	Neg
		MD	-0.046	
		SDD	0.106	
		Dist	0.116	

Compliance Rates:

Correct Negatives	100%
Correct Positives	100%
Overall Compliance	100%
Qualitative Interpretation	100%

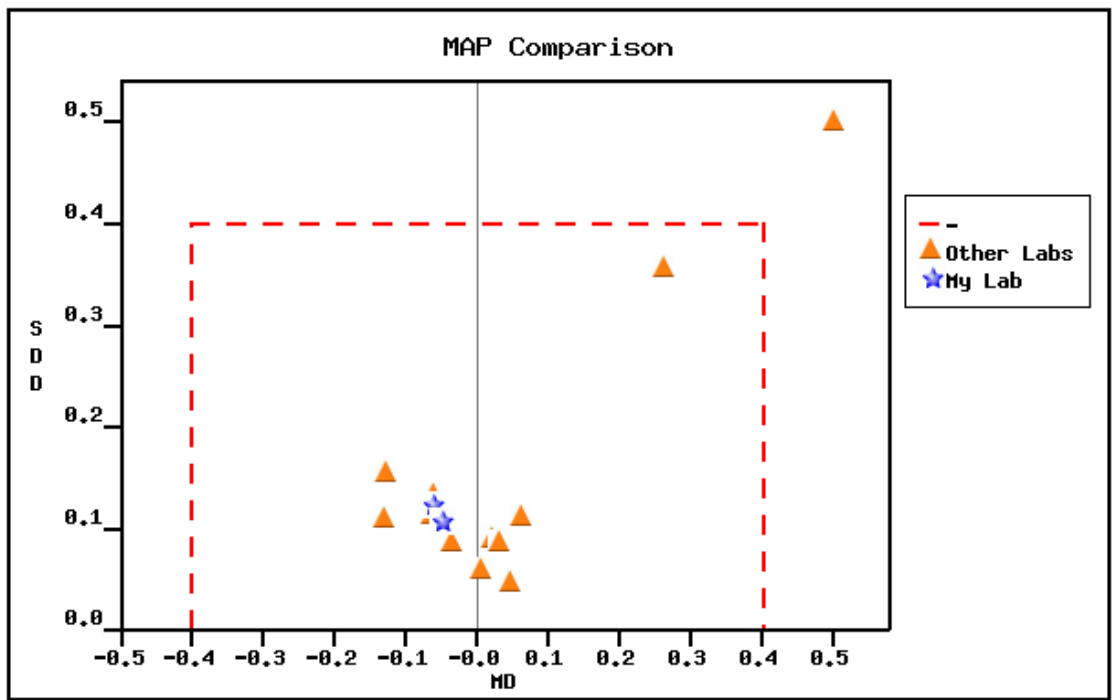




ELISA Proficiency Program Samples Unknown Trial 108 On 8/16/2010

ANTELBIO

Lab Tech	MD	SDD	D	Comp.
	0.007	0.060	0.061	100%
	0.048	0.048	0.068	100%
	0.021	0.090	0.092	100%
	0.032	0.087	0.093	100%
	-0.035	0.088	0.095	100%
Jessica Houseman	-0.046	0.106	0.116	100%
	0.064	0.113	0.130	100%
	-0.063	0.114	0.130	100%
Heather Donohue	-0.058	0.121	0.134	100%
Heather Donohue	-0.058	0.121	0.134	100%
	-0.061	0.134	0.147	100%
	-0.129	0.110	0.169	100%
	-0.128	0.155	0.201	100%
	0.262	0.357	0.443	100%
	0.829	0.824	1.169	100%



Done

File Edit View History Bookmarks Tools Help

http://www.quality-certification.com/elisa/Guidelines and Procedures for DHI ELISA Testing - Version 10.2.

Most Visited Customize Links Free Hotmail Windows Marketplace Windows Media Windows

National DHIA Quality Certification Services, Inc. Guidelines and Procedures for DH...

9 / 12 102% Sign Find

Exclusion of Results

Results submitted by participating laboratories that are noted as 'Laboratory Error' or 'Sample Problem' will be excluded from both quantitative and qualitative analysis for the test period. The final decision on the exclusion of any or all data points lies with the QCS manager.

Compliance Criteria

For each assay analyzed, participating laboratories are required to achieve and maintain the following compliance levels:

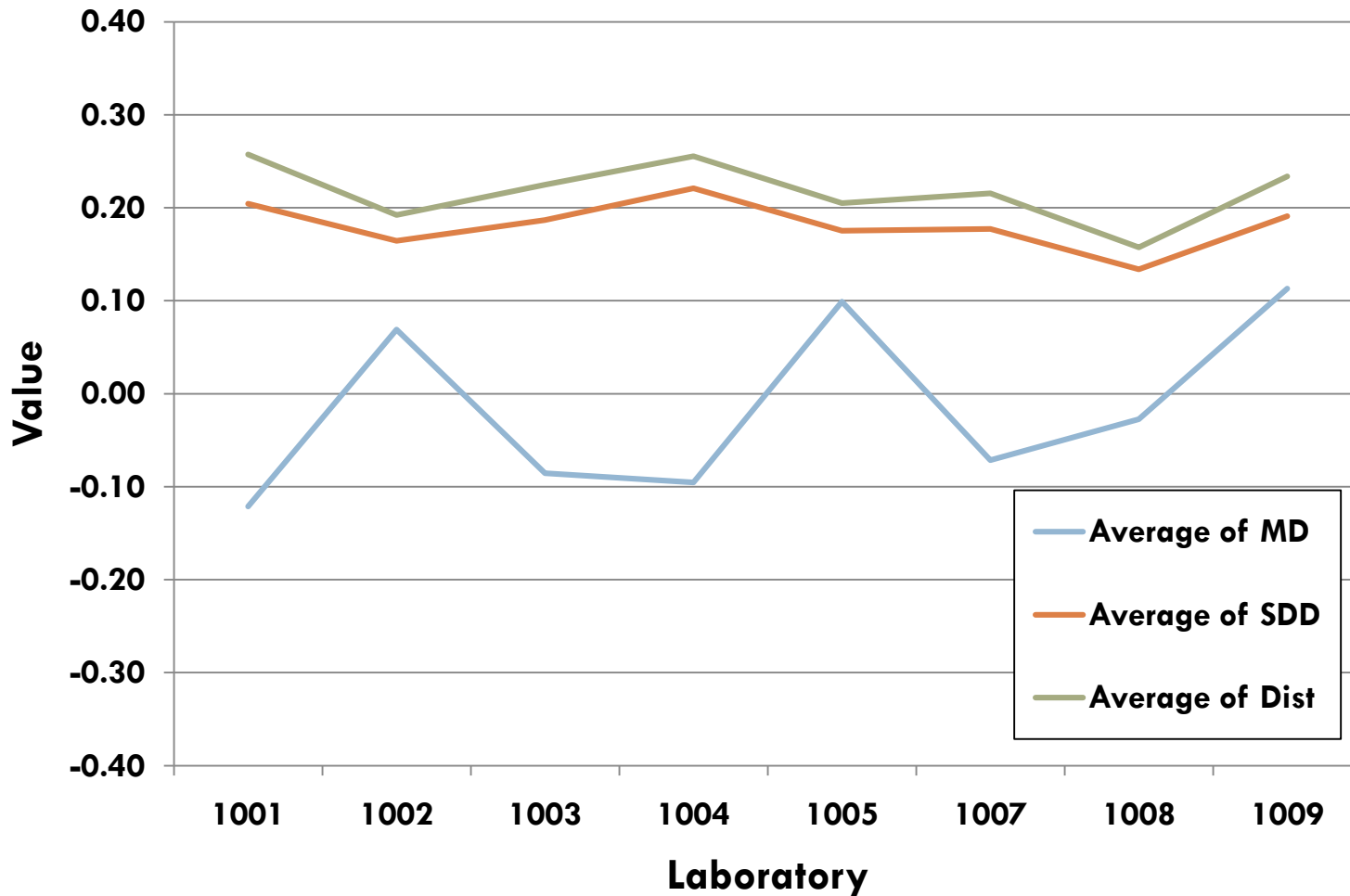
- Quantitative Analysis
 - MD (mean difference) less than or equal to 0.40
 - SDD (standard deviation of differences) less than or equal to 0.40
- Qualitative Analysis
 - Correct Interpretation Level of 90% or higher

Qualification

Each participating laboratory will be required to maintain a passing criteria each month, each technician, and each assay. As previously described, the QCS website will maintain a current list of all qualified technicians and proficient laboratories.

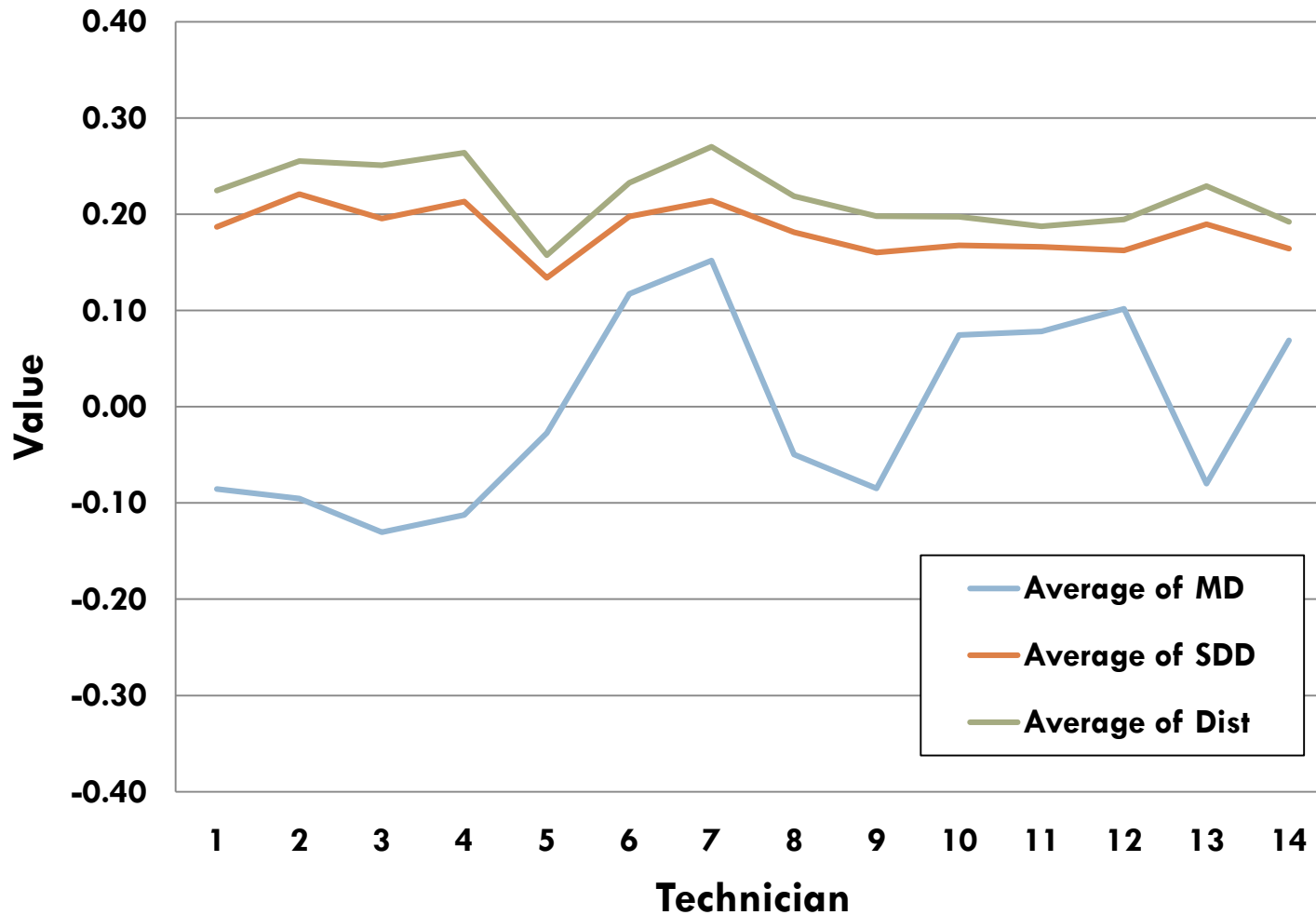
8-Month Summary

Performance of DHI Laboratories



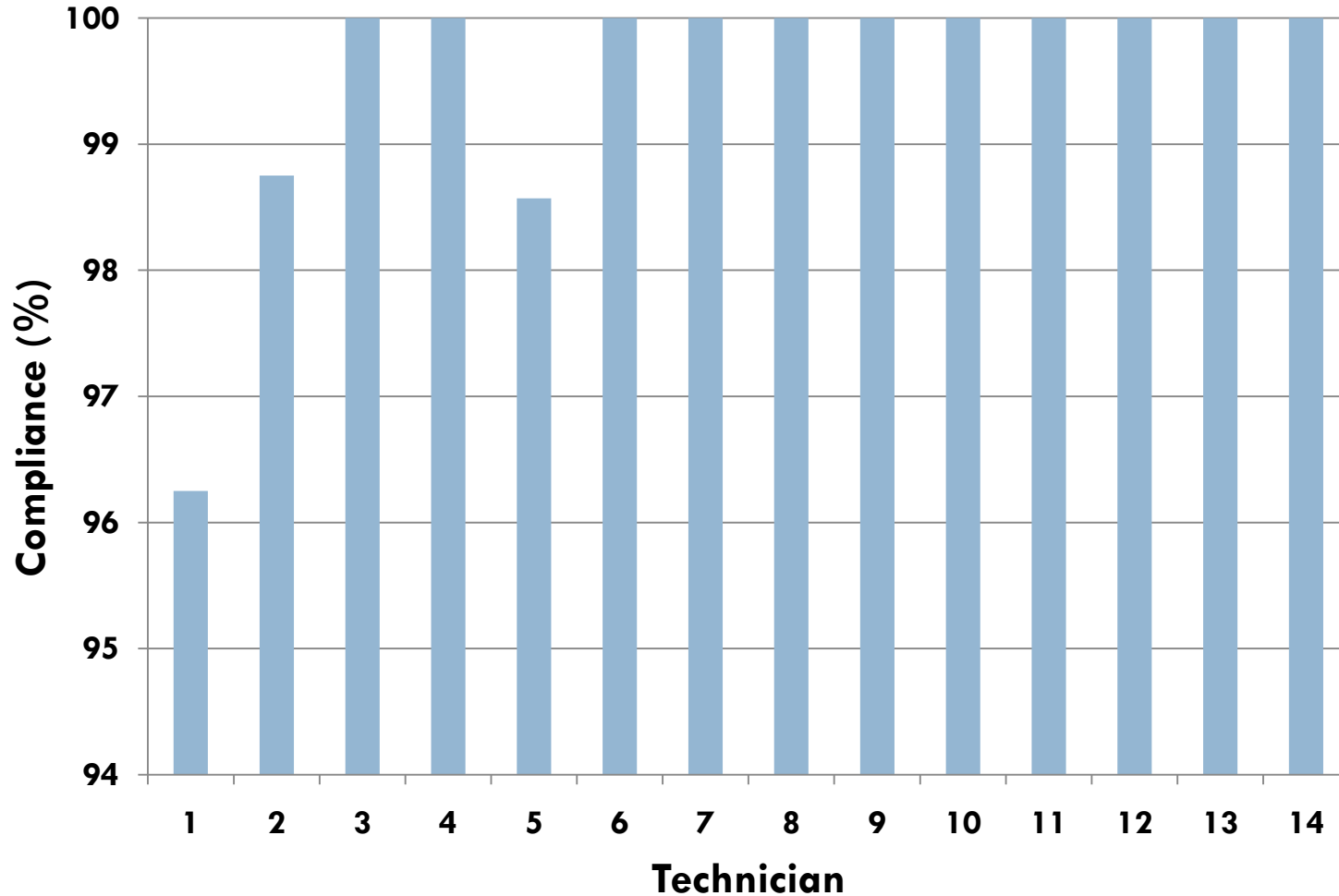
8-Month Summary

Performance of DHI ELISA Technicians



8-Month Summary

Performance of DHI ELISA Technicians



Rational For Resolution

- QCS experience
- Screening assay
- Milk sample sourcing cumbersome
- Expanded proficiency evaluation
 - ▣ Monthly
 - ▣ Technician analysis
- Industry driven

Action Item

- At the discretion of Designated Johne's Coordinators, laboratories conducting milk ELISA testing for Johne's disease can fulfill certification requirements of the Voluntary Bovine Johne's Control Program by satisfactory participation in the Quality Certification Services (QCS) ELISA Proficiency Program with USDA/APHIS/VS/NVSL oversight.

SAC Discussion

- Sets a “slippery” precedent for other program diseases
 - Acceptable participation in proficiency testing programs is as follows:
 - Programs that are available through commercial proficiency testing programs (see listing on the A2LA website), and;
 - Programs that are available through well-organized inter-laboratory comparisons (ILCs).
 - Discretion of DJC’s
 - NVSL evaluation/oversight
- Accommodation (barrier) of infrequently used (new) tests
 - A problem with all quantitative proficiency inter-laboratory programs
 - Qualitative component until use increases for quantitative evaluation

