



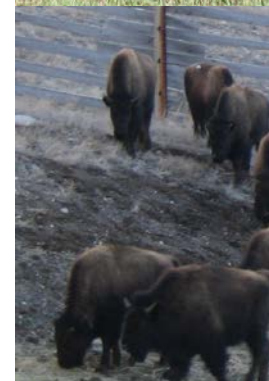
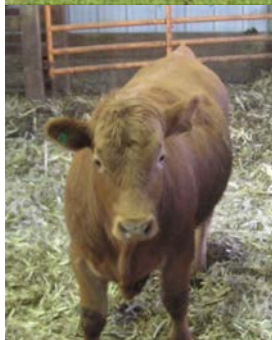
United States Department of Agriculture

Veterinary Services

National Brucellosis Eradication Program Update

USAHA Committee on Brucellosis

U.S. Department of Agriculture
Animal and Plant Health Inspection Service
Veterinary Services
October 21, 2013

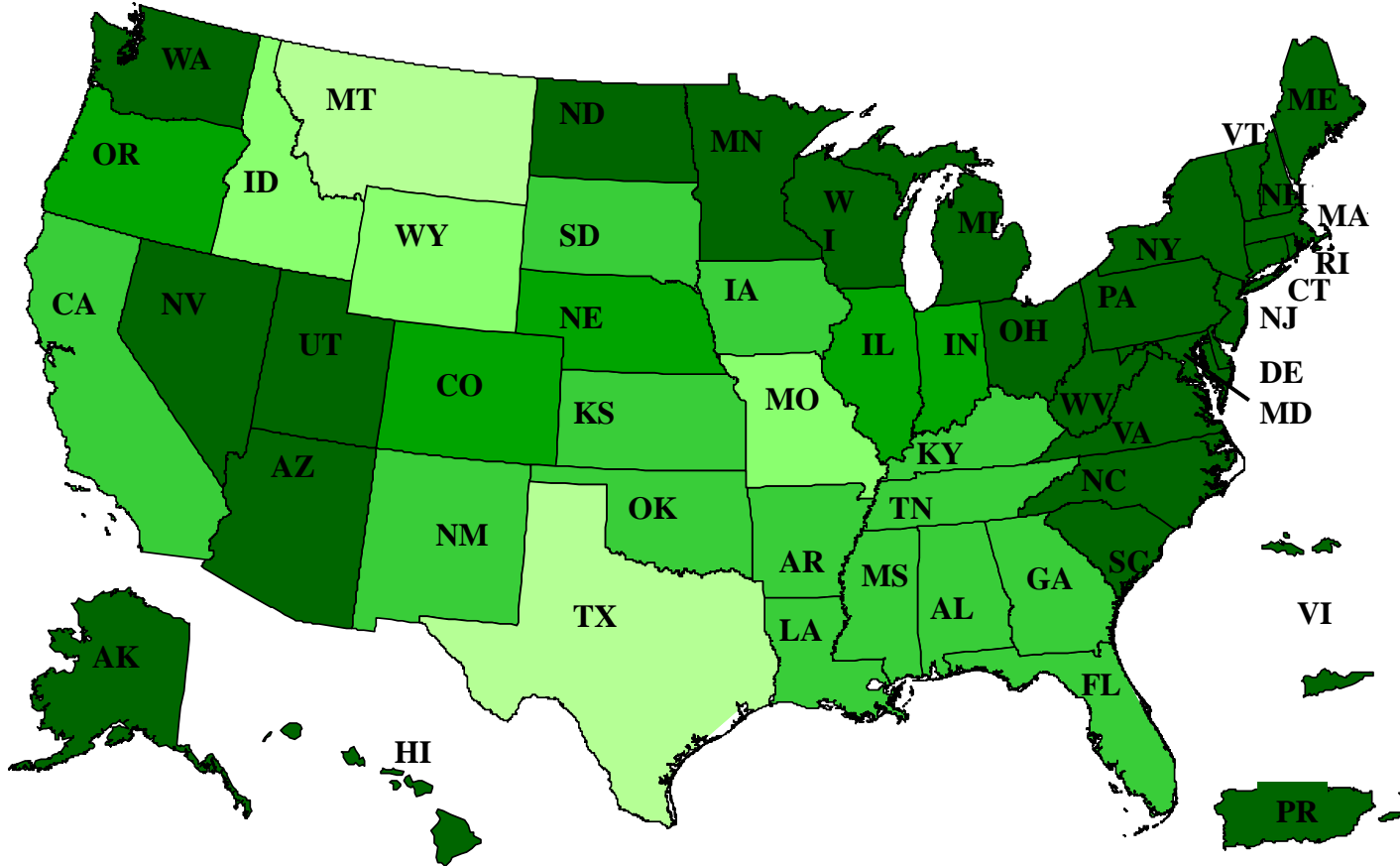


Overview

- Brucellosis: Current Status
- Interim Rule & Final Rule
- Combined TB/Brucellosis Proposed Rule
- Brucellosis Surveillance Plan



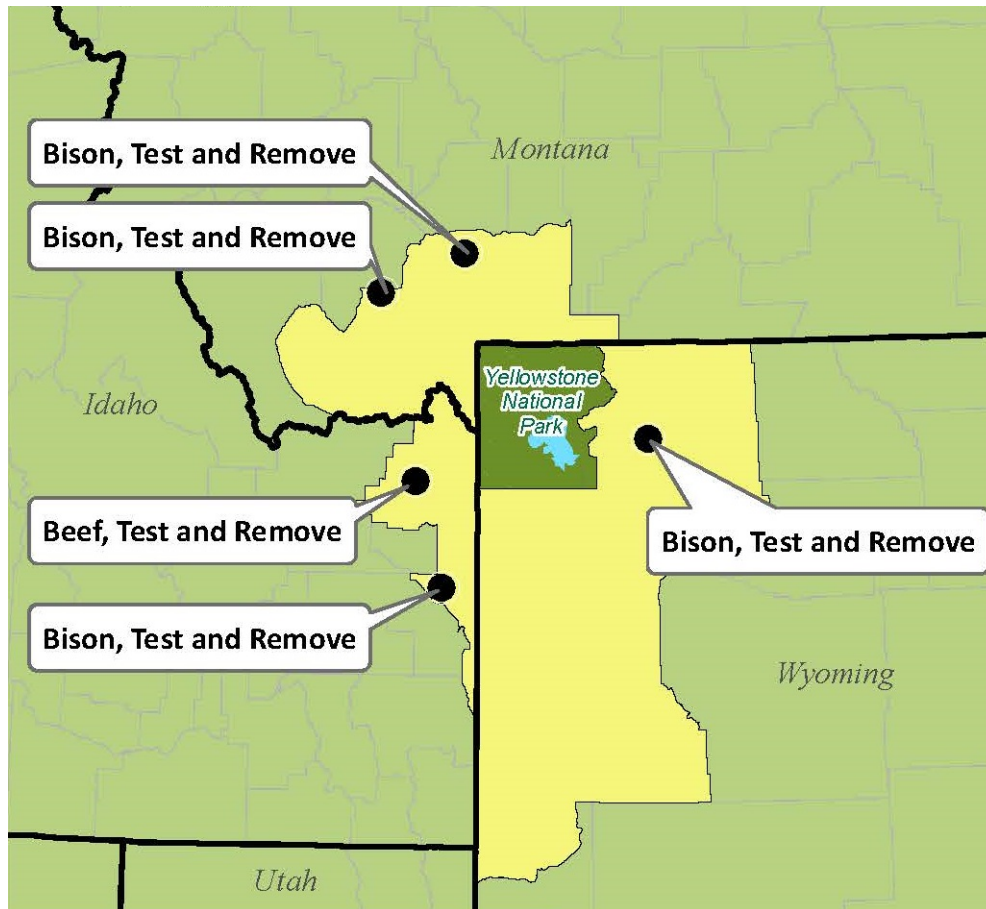
Brucellosis: Current Status



July 10, 2009:
 All 50 States,
 Puerto Rico,
 and the U.S.
 Virgin Islands
 classified as
 Class Free for
 bovine
 brucellosis

Free Current year
 Free 1-5 yrs
 Free 6-10 yrs
 Free 16-20 yrs
 Free 21+ yrs

Brucellosis Affected Herd Activities



- Five affected herds (four bison, one beef) remain under test and remove herd plans from 2011 & 2012
- One new case was detected in FY2013 (beef herd in Montana) [not on map]
- All States remain classified as Class Free for bovine brucellosis.

2013 Program Numbers

- Market Cattle Identification (MCI) Surveillance:
 - ~ 2.9 million head of cattle tested at slaughter
 - ~ 164,000 head of cattle tested at market
- On-Farm Testing: ~ 383,400 head of cattle tested on-farm or ranch
- Vaccination:
 - Calfhood vaccination – ~ 3.6 million calves vaccinated
 - Adult vaccination – ~ 19,500 adult cattle vaccinated
- Certified-Free Herds: 539 herds

Data: August 1, 2012 - July 31, 2013

Brucellosis Interim Rule

- Published in the *Federal Register* on December 27, 2010.
- 60-day comment period ended February 25, 2011.
- 30 comments received from private citizens, State agencies, industry groups, animal welfare organizations, environmental groups, and Congress.
- Final rule is under review.

Joint TB/Brucellosis Working Group

The screenshot shows the USDA Animal and Plant Health Inspection Service website. The main content area is titled "Animal Health" and "Tuberculosis/Brucellosis Working Group". It contains the following text:

In October 2009, USDA published two concept papers in the Federal Register that proposed new directions for two of its longstanding disease eradication programs – bovine tuberculosis and brucellosis. Several objectives described in the concept papers were common among both programs. USDA is streamlining its rulemaking efforts by merging the needs of both programs into a single rule while ensuring the particular needs of each program are met.

USDA will work closely with its stakeholders to obtain input on the proposed strategies, program standards, surveillance plans, and other policy concepts throughout the regulatory process and before publishing any proposed regulations. As a result, the Tuberculosis/Brucellosis Working Group was formed.

The Tuberculosis/Brucellosis Working Group will serve as a:

- Forum for discussion about the overarching regulatory concepts that USDA considers as it develops the proposed rule.
- Medium for obtaining feedback from and sharing information to respective organizations regarding the framework for the proposed regulation for both programs.

For more information about the diseases, please visit the website below:

- Tuberculosis
- Brucellosis

Related Topics:

- Calendar of Events
- Feedback
- Newsroom
- Public Meetings
- Resources
- Toolkit
- Workgroup Updates

I Want To...

- USDA Directory
- State Veterinary Directory
- APHIS Animal Diseases
- Animal Diseases by Species
- Tuberculosis
- Tuberculosis Hot Issues
- Brucellosis

Last Modified: September 17, 2010

APHIS Home | USDA.gov | Site Map | Policies and Links | FOIA | Accessibility Statement | Privacy Policy | Non-Discrimination Statement | Information Quality | USA.gov | White House

- Published comprehensive regulatory framework with opportunity for public comment
- Public meetings in May and June 2011

http://www.aphis.usda.gov/animal_health/tb_bruc/

Next Steps and Timeline

- In Progress
 - Departmental review of the proposed rule and program standards
- Early calendar year 2014
 - Publish proposed rule in the *Federal Register*
 - Post program standards on www.regulations.gov

Revised Brucellosis Slaughter Surveillance Plan

Background

- Spring of 2012 - new target of 1-1.2 million samples.
- 95 percent confidence of detecting one infected animal in 100,000 U.S. cattle.
- Key considerations included:
 - Plant volume
 - Catchment
 - Plants' willingness to continue to collect samples at a reduced level
 - Cost per sample
 - Sample quality
- Estimated surveillance cost from approximately \$1,600,000 to \$798,000.
- Since January 2013, discussions with a subgroup of the National Assembly.

Revised Brucellosis Slaughter Surveillance Plan

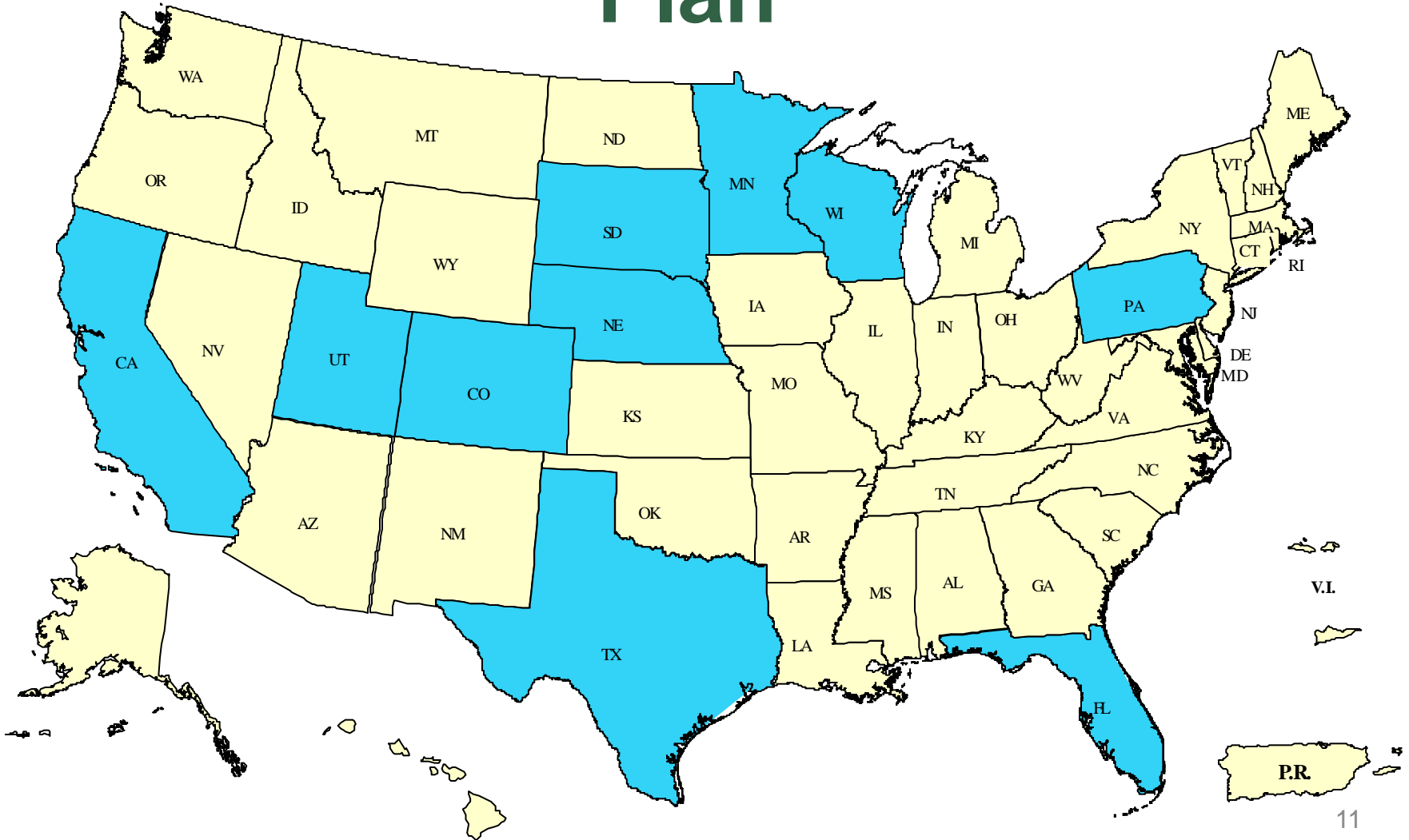
Plants – In addition to the plants already named in the 2012 plan:

- Brush Meat Processors in Colorado to incorporate sampling of bison
- L & H in Texas
- Cimpl's in South Dakota

This brings the number of slaughter establishments to 11 and will cost an additional \$128,000 over the 2012 plan.



Revised Slaughter Surveillance Plan



Revised Brucellosis Slaughter Surveillance Plan

Laboratories

- Federal laboratory in Kentucky as the primary surveillance laboratory.
- VS will add the Texas State laboratory to the list of laboratories testing national slaughter surveillance samples.
- Utah State laboratory for samples collected at the Dale T. Smith plant in Utah.
- State laboratories in the three GYA States for all samples that are collected within those States.
- This will result in approximately 1,295,000 samples being shipped to the Kentucky lab, 461,000 to the Texas lab, and 38,000 to the Utah lab.
- Diverting all Texas samples to the Texas laboratory results in a program savings of \$147,000 from the October 2012 plan.

Summary

- Brucellosis: Current Status
- Interim Rule/Combined TB/Bru Proposed Rule
- Brucellosis Surveillance Plan



Questions?

