



Idaho Brucellosis Update

USAHA Brucellosis Committee

San Diego, CA

October 21, 2012

Bill Barton, DVM

Administrator/State Veterinarian

2012 Cases



- Domestic bison herd in Swan Valley
 - 3 whole herd tests completed with at least 1 reactor identified on each test
 - Remains under quarantine and operating under herd plan
 - Next whole herd test scheduled for Fall 2013

2012 Cases



- Cattle herd west of Ashton
 - Remains under quarantine
 - Operating under approved herd plan
 - Had 2 negative whole herd tests in 2012
 - Post calving test in April 2013 identified 1 reactor
 - Whole herd negative test in August 2013
 - Whole herd negative test October 11, 2013
 - Post calving test to be conducted Spring 2014

Brucellosis Review Recommendations



- Expand the DSA.
 - Expanded by rule during 2013 Legislative Session
- Work with Idaho Department of Fish & Game to enhance surveillance of wild elk in areas around the DSA.
 - Enhanced hunter surveillance in areas outside of the DSA.
 - Live animal capture and testing whenever feasible
 - Continue aggressive elk/cattle interaction mitigation actions.



Brucellosis Review Recommendations

- Implement pre-slaughter testing of all DSA slaughter cattle at livestock markets.
 - Implemented pre-slaughter testing of DSA cattle at Livestock Markets.
- Enhance enforcement of movement testing & ID requirements utilizing Brand Inspectors.
 - Rule change proposed that will require cattle producers utilizing Idaho's DSA to obtain a permit prior to movement of cattle out of the DSA.
 - Negotiated rulemaking meetings held to allow producer input. Good producer support.

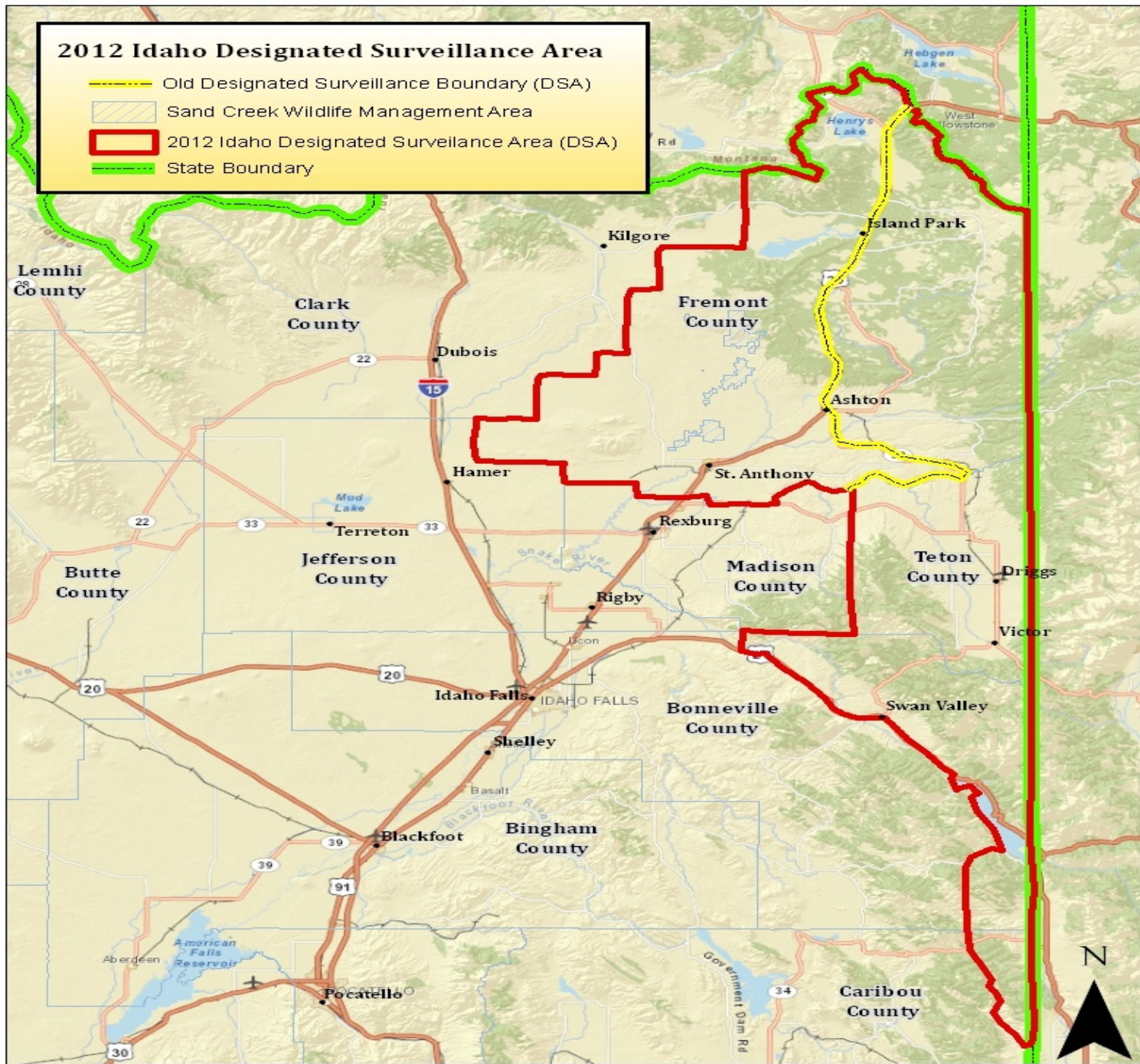
Brucellosis Review Recommendations



- Increase public outreach
 - Multiple meetings held with the Idaho Cattle Association general membership
 - ICA appointed a producer committee to assist with enforcement of testing requirements
 - Numerous local meetings have been held with producers in and around the DSA.
 - IDF&G assisting with outreach to hunters and landowners.

2012 Idaho Designated Surveillance Area

- Old Designated Surveillance Boundary (DSA)
- Sand Creek Wildlife Management Area
- 2012 Idaho Designated Surveillance Area (DSA)
- State Boundary





Contact Information

Bill Barton, DVM

Administrator/State Veterinarian

Idaho State Department of Agriculture

208-332-8540

bill.barton@agri.idaho.gov

